

DRAMIŃSKI *iScan 2*

Modern technology in your hand



- **Two versions:**
with a linear rectal probe
and rectal convex probe
- **Excellent image quality**
- **Weight: 2.4 kg with the battery
and the probe**
- **Up to 7 working hours on single charge**
- **Easy to clean and disinfect**



AVAILABLE IN TWO VERSIONS

DRAMIŃSKI *iScan 2*



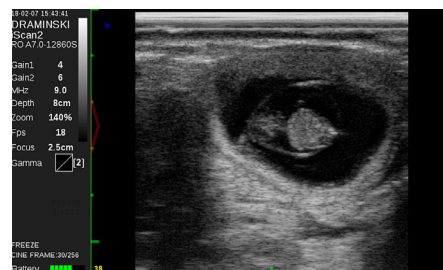
Accurate diagnostics due to high quality image



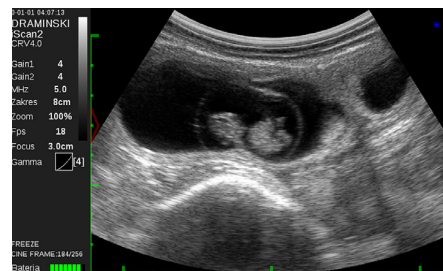
Cow: ovary, image from the linear probe.



Cow: ovary, image from the convex probe.



Cow: 38th day of pregnancy, image from the linear probe.



Cow: 38th day of pregnancy, image from the convex probe.



Water resistant when the battery is not attached.

iScan 2 with a rectal convex probe

- rectal convex probe 5.0 MHz (from 3 to 7.5 MHz)
- radius – 61.2 cm
- angle of scanning – 64°
- 128 elements
- range up to 25 cm
- rectal and abdominal testing

iScan 2 with a linear rectal probe

- linear rectal probe 7.0 MHz (from 4 to 9MHz)
- active field – 60 mm
- angle of scanning – not applicable
- 128 elements
- range up to 15 cm
- rectal testing

Technical data

weight of the device	2400 g with a probe and a battery pack
monitor	diagonal 7.0" IPS LCD LED; 800x480 px
goggles	yes - option
how the probe is attached	permanent connection
continuous working time on fully charged battery	up to 7 hours
time of battery charging	4 hours
protection against dust and water	IP 65
modes of imaging	B mode, B+B mode, B+M mode
greyscale	256 shades
gamma	8 configurations
postprocessing	yes: improvement of contrast, edge enhancement
full screen	yes
memory of images and cine loops	200 / 200
quick access menu	yes, customized
measurements	distance, surface area (from 2 measurements), volume, grid, table of ages, backfat + muscles